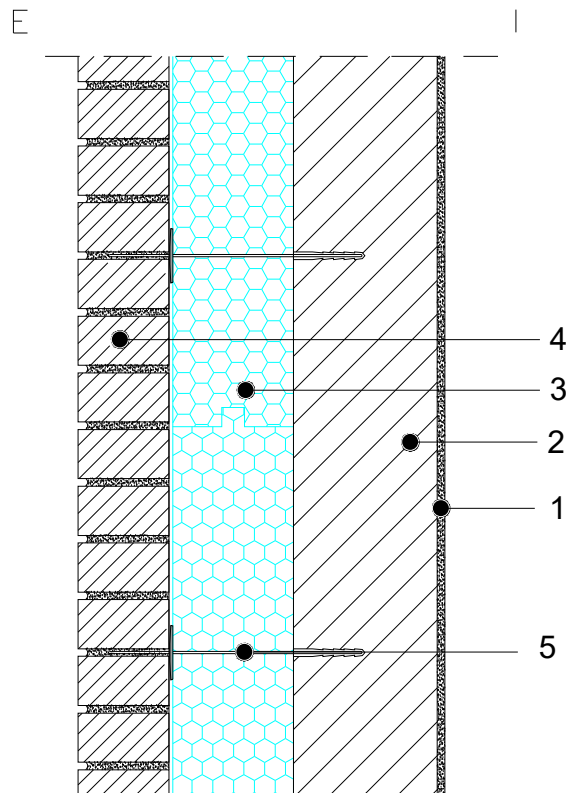


**EXTERNAL WALL
OVERCLADDED FACADE**

XPS THERMAL INSULATION
BASIC SECTION
M 1:10

1.5.1.00**COMPOSITES:**

1. INTERNAL PLASTER
2. EXTERNAL WALL
3. FIBRAN *xps* MAESTRO
4. VISIBLE FACADE BRICK
5. UNIVERSAL FACADE FASTENER