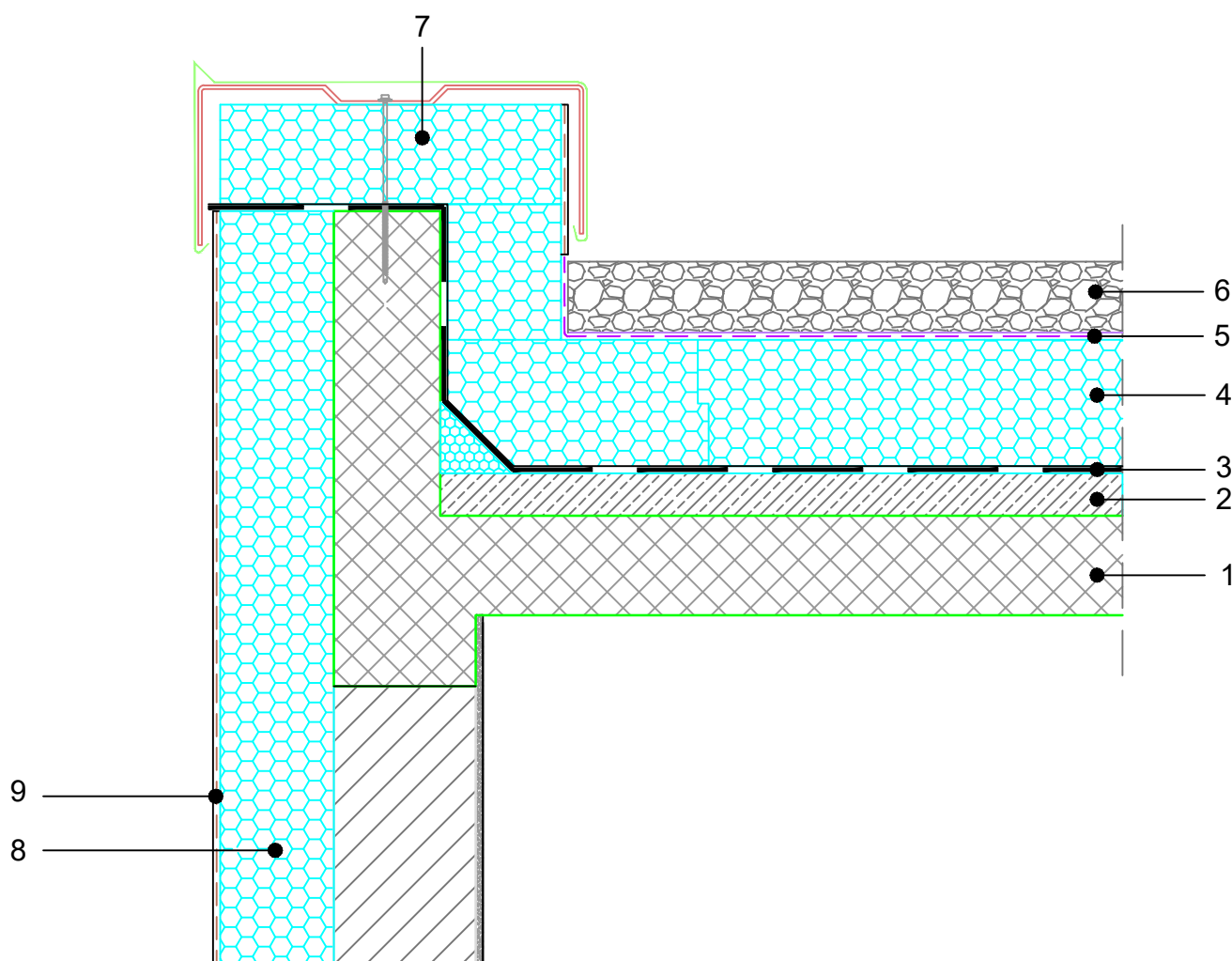


INVERTED FLAT ROOF
 NON WALKABLE skin SEAL ROOF
 PEBBLE
 ROOF EDGE, M 1:10

10.11.1.02



COMPOSITION of system solution (dimensions in detail to be calculated):

1. REINFORCED CONCRETE SLAB
2. INCLINED CONCRETE
3. WATERPROOFING
4. FIBRAN xps 300-L
5. FIBRAN $skin$ SEAL – vapor-permeable waterproof membrane for rapid drainage
6. PEBBLE
7. OUTER WALL
8. FIBRAN xps ETICS
9. FACADE PLASTERS

NOTE:

- It is not allowed to work with an open flame in the close proximity of the XPS insulation.
- When choosing type of waterproofing, it is necessary to take into account that chlorides of PVC membrane have neg. affect on XPS.
- joining of FIBRAN $skin$ membrane overlaps with double-sided adhesive tape FIBRANTape 2SEAL
- Point 2. - Production upon project request