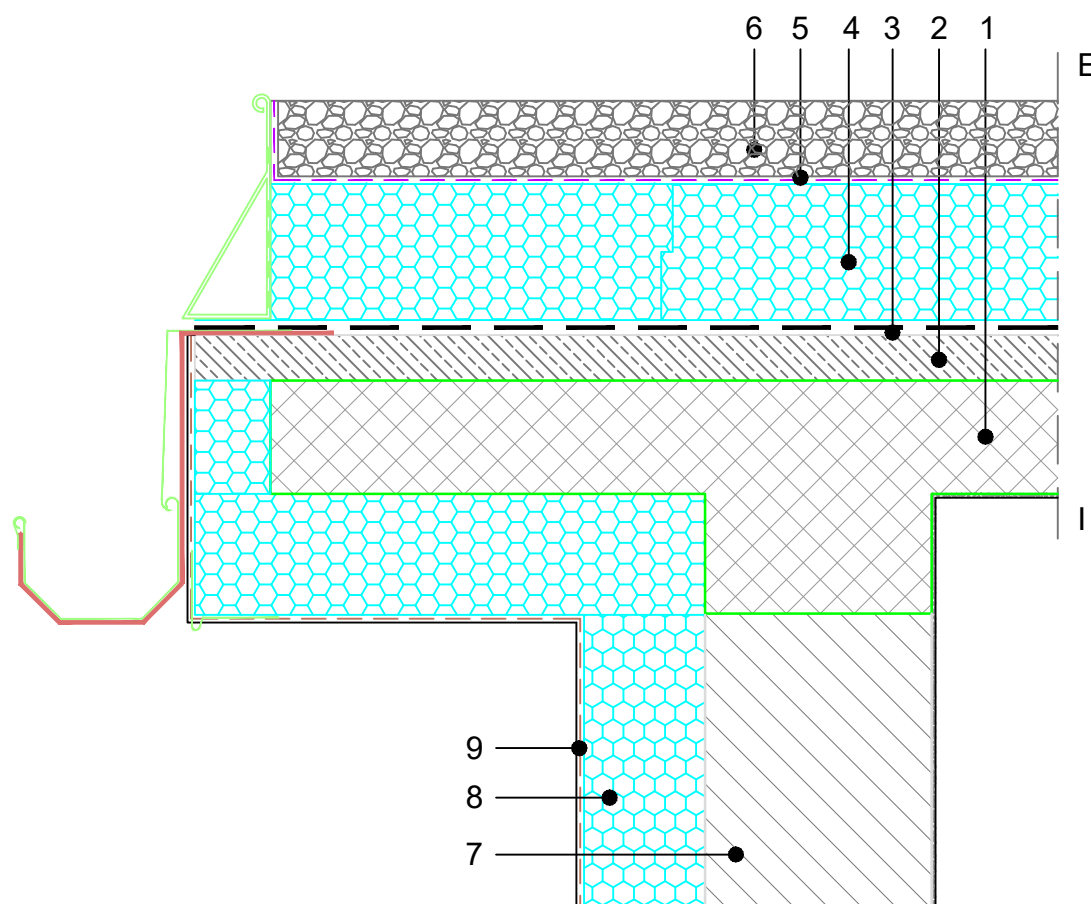


INVERTED FLAT ROOF
 NON WALKABLE skin SEAL ROOF
 PEBBLE
 WATER OUTLET, M=1:5

10.11.1.03



COMPOSITION of system solution (dimensions in detail to be calculated):

1. REINFORCED CONCRETE SLAB
2. INCLINED CONCRETE
3. WATERPROOFING
4. FIBRAN xps 300-L
5. FIBRAN $skin$ SEAL – vapor-permeable waterproof membrane for rapid drainage
6. PEBBLE
7. FIBRAN $filter$ SF32 around perforated separation element (wateroutlet)
8. SOFT INSULATION

NOTE:

- It is not allowed to work with an open flame in the close proximity of the XPS insulation.
- When choosing type of waterproofing, it is necessary to take into account that chlorides of PVC membrane have neg. affect on XPS.
- joining of FIBRAN $skin$ membrane overlaps with double-sided adhesive tape FIBRAN $tape$ 2SEAL
- Point 2. - Production upon project request