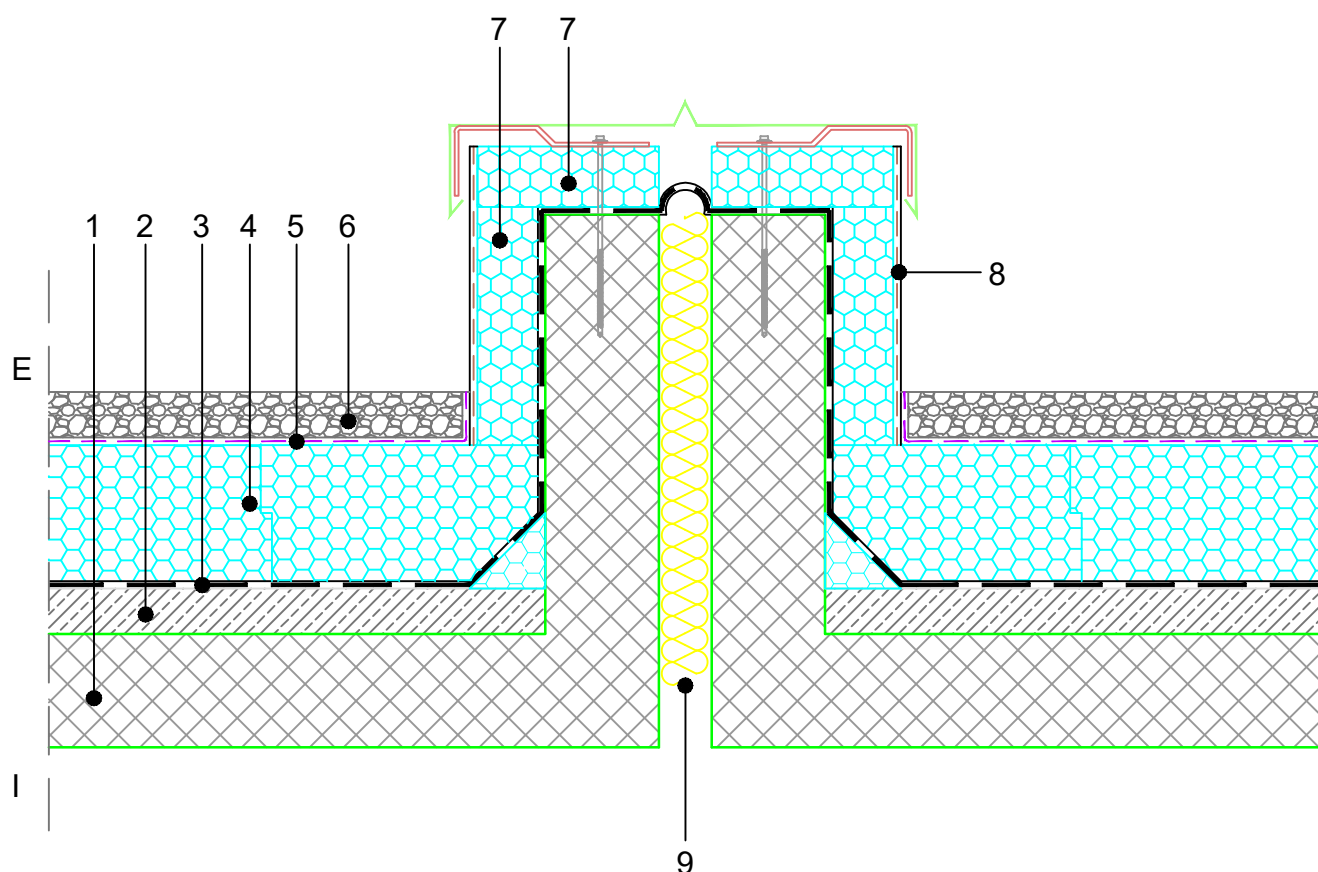


INVERTED FLAT ROOF  
 NON WALKABLE skin SEAL ROOF  
 PEBBLE  
 SKY LIGHT, M 1:10

**10.11.1.05**



COMPOSITION of system solution (dimensions in detail to be calculated):

1. REINFORCED CONCRETE SLAB
2. INCLINED CONCRETE
3. WATERPROOFING
4. WATERPROOFING with slate chippings
5. FIBRAN $xps$  300-L
6. FIBRAN $skin$  SEAL – vapor-permeable waterproof membrane for rapid drainage
7. PEBBLE

NOTE:

- It is not allowed to work with an open flame in the close proximity of the XPS insulation.
- When choosing type of waterproofing, it is necessary to take into account that chlorides of PVC membrane have neg. affect on XPS.
- joining of FIBRANSkin membrane overlaps with double-sided adhesive tape FIBRANTape 2SEAL
- Point 2. - Production upon project request