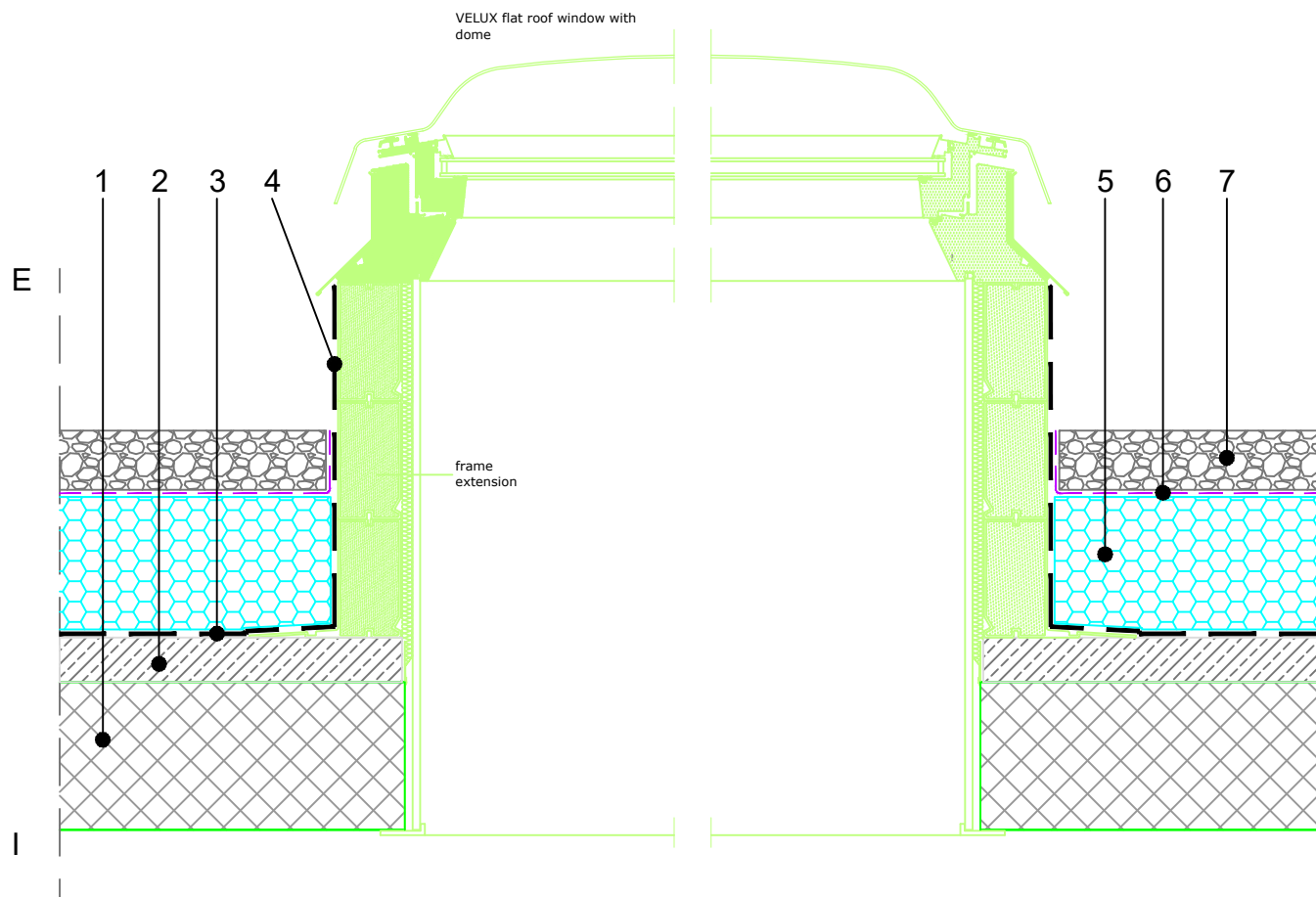


INVERTED FLAT ROOF  
 NON WALKABLE skin SEAL ROOF  
 PEBBLE  
 SKY LIGHT, M 1:10

**10.11.1.07**



COMPOSITION of system solution (dimensions in detail to be calculated):

1. REINFORCED CONCRETE SLAB
2. INCLINED CONCRETE
3. MASK
4. WATERPROOFING
5. WATERPROOFING with slate chippings
6. FIBRAN *xps* 300-L
7. FIBRAN *skin* SEAL – vapor-permeable, waterproof membrane for quick drainage
8. PEBBLE

NOTE:

- It is not allowed to work with an open flame in the close proximity of the XPS insulation.
- When choosing type of waterproofing, it is necessary to take into account that chlorides of PVC membrane have neg. affect on XPS.
- joining of FIBRANskin membrane overlaps with double-sided adhesive tape FIBRANTape 2SEAL
- Point 2. - Production upon project request