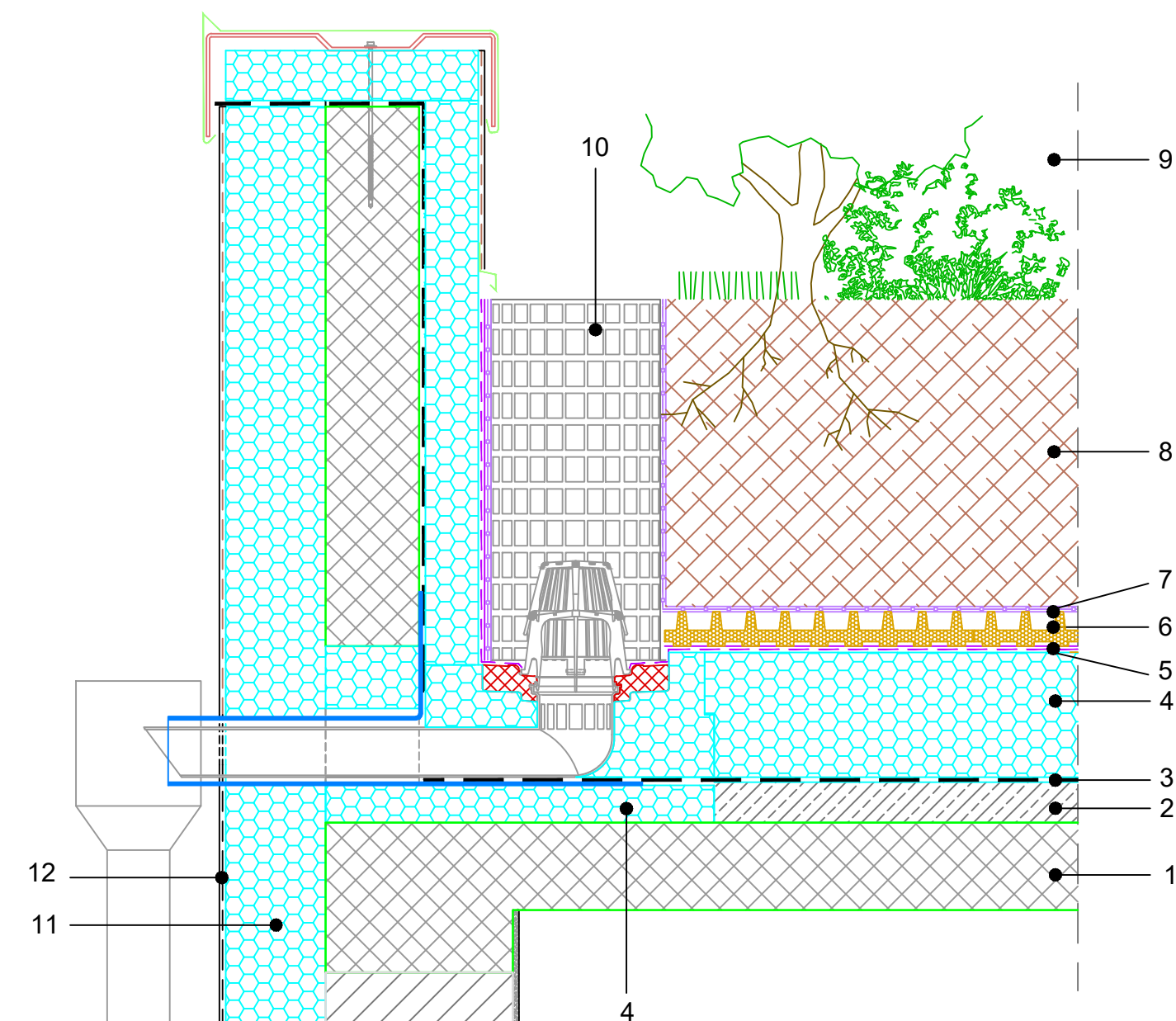


INVERTED FLAT ROOF
 GREEN skin SEAL ROOF
 INTENSIVE GREENERY – TREES
 ANGULAR RAINWATER OUTLET No 1 THROUGH PARAPET WALL
 SCALE 1:10

10.14.3.04



COMPOSITION of system solution (dimensions in detail to be calculated):

1. REINFORCED CONCRETE SLAB
2. INCLINED CONCRETE
3. ROOT RESISTANT WATERPROOFING
4. FIBRAN xps 300-L
5. FIBRAN $skin$ SEAL – vapor-permeable, waterproof membrane for quick drainage
6. DRAINAGE-ACCUMULATION LAYER
7. FIBRAN $filter$ SF32 – drainage PP fleece
8. GROWING MEDIUM more than 30 cm
9. VEGETATION: GRASSES, PERENNIALS, GROUND COVERS, SMALL SHRUBS
9. PERFORATED INSPECTION CHAMBER
10. FIBRAN xps ETICS
11. FACADE PLASTERS

NOTE:

- It is not allowed to work with an open flame in the close proximity of the XPS insulation.
- When choosing type of waterproofing, it is necessary to take into account that chlorides of PVC membrane have neg. affect on XPS.
- joining of FIBRAN $skin$ membrane overlaps with double-sided adhesive tape FIBRAN $tape$ 2SEAL
- Root barrier: as rootresistant waterproofing or by additional eco-product Root PROTECTOR instead FIBRAN $skin$ SEAL membrane