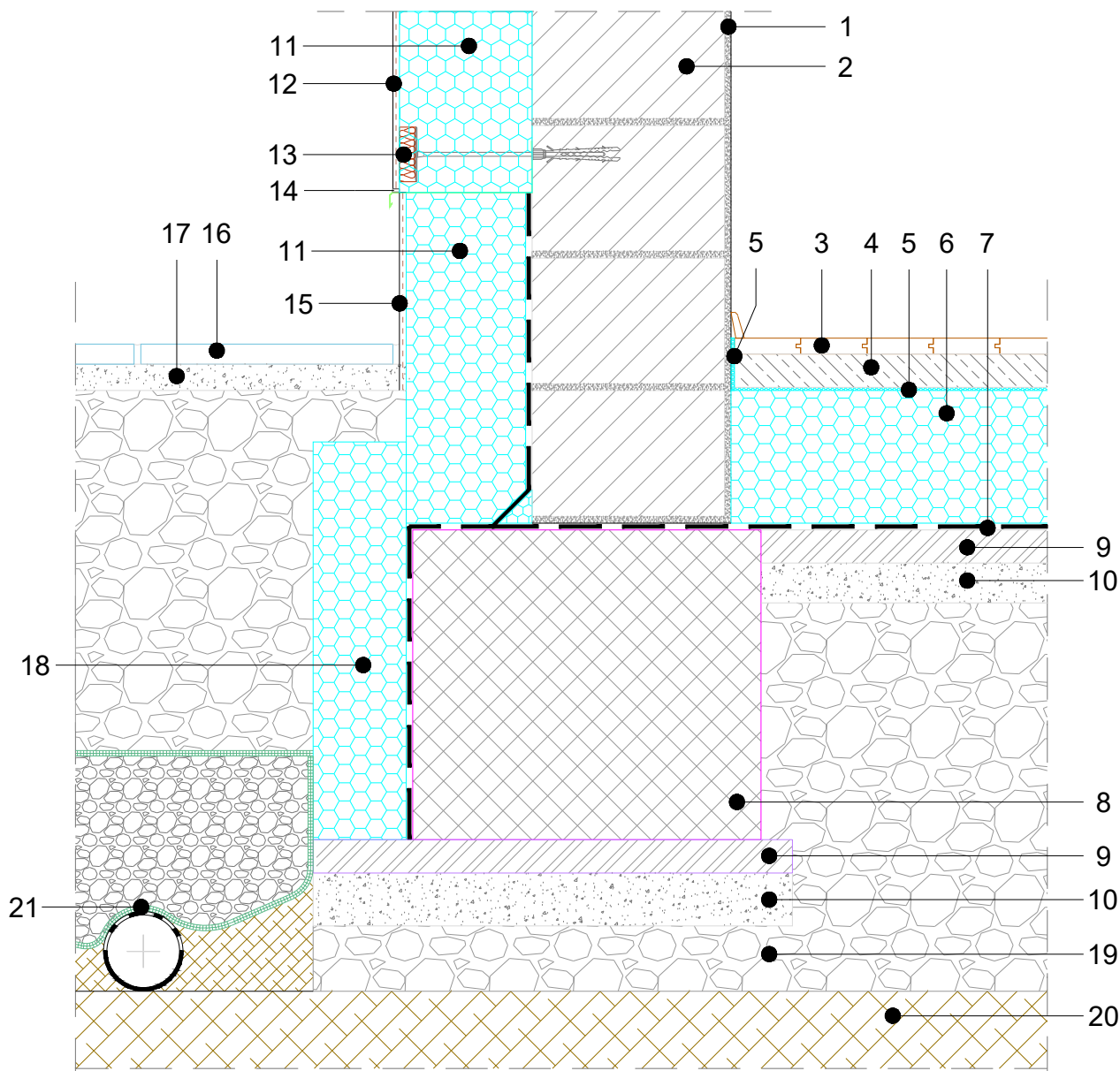


**FLOOR AT THE GROUND LEVEL**  
**FOUNDATION SLAB - LOW ENERGY BUILDING**

WATERPROOFING LAYED ONTO LEAN CONCRETE  
 STRIP FOUNDATION, BUILDING WITHOUT BASEMENT  
 M 1:10

**4.02.1.0.01**



COMPOSITION OF SYSTEM SOLUTION (dimensions in the detail to be calculated):

- |   |   |
|---|---|
| 1. INNER PLASTER                              | 10. LEVELING SAND                           |
| 2. OUTER WALL                                 | 11. FIBRAN <i>xps</i> ETICS                 |
| 3. WOODEN FLOOR / PARQUET                     | 12. PLASTER                                 |
| 4. CEMENT SCREED                              | 13. INSULATION ANKER                        |
| 5. EXTRUDED PE FOIL – IMPACT SOUND INSULATION | 14. FACADE DRIPPING EDGE OR ELASTIC SEALANT |
| 6. FIBRAN <i>xps</i> 300–L                    | 15. WATER REPELENT PLASTER                  |
| 7. WATERPROOFING                              | 16. CONCRETE PAVERS                         |
| 8. REINFORCED CONCRETE                        | 17. SAND                                    |
| 9. LEAN CONCRETE                              | 18. FIBRAN <i>xps</i> 300–L                 |
|   | 19. CRUSHED GRAVEL                          |
|   | 20. COMPACTED SOIL                          |
|   | 21. FIBRAN <i>filter</i> SF32               |

NOTE: - It is not allowed to work with an open flame in the close proximity of the XPS insulation.  
 - When using PVC membranes, a separation layer (i.e. FIBRAN *filter* SF32) must be installed between the PVC membrane and the XPS.