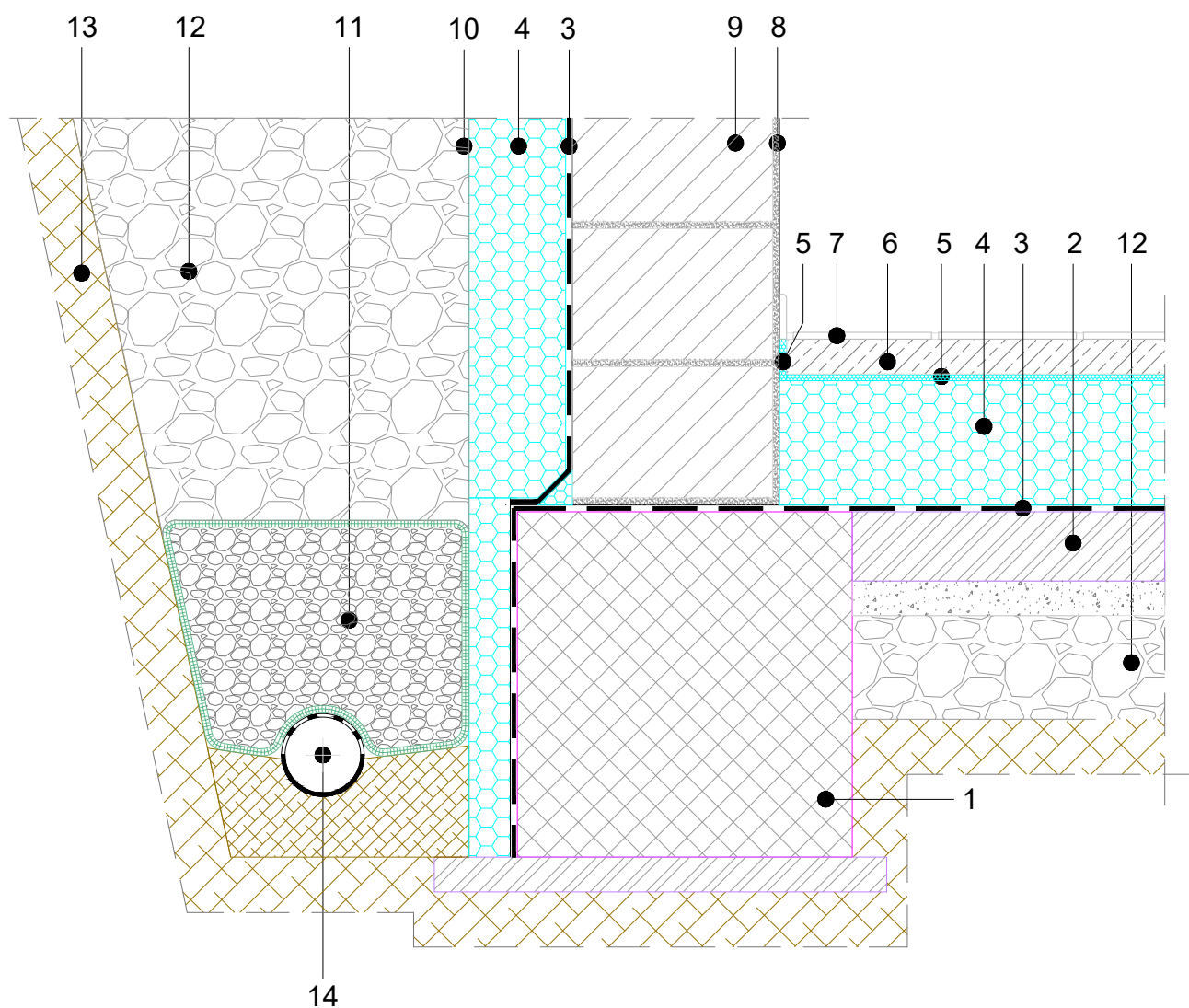


**FLOOR AT THE GROUND LEVEL
FOUNDATION SLAB - LOW ENERGY BUILDING**

WATERPROOFING LAYED ONTO LEAN CONCRETE
STRIP FOUNDATION, BUILDING WITH BASEMENT
M 1:10

4.02.1.0.02



COMPOSITION OF SYSTEM SOLUTION (dimensions in the detail to be calculated):

- | | |
|---|-------------------------------|
| 1. REINFORCED CONCRETE | 10. FIBRAN <i>filter</i> SF32 |
| 2. LEAN CONCRETE | 11. PEBBLE |
| 3. WATERPROOFING | 12. COARSE GRAVEL |
| 4. FIBRAN <i>xps</i> 300-L | 13. SOIL |
| 5. EXTRUDED PE FOIL – IMPACT SOUND INSULATION | 14. DRAINAGE PIPES |
| 6. CEMENT SCREED | |
| 7. CERAMIC TILES | |
| 8. INNER PLASTER | |
| 9. OUTER WALL | |

NOTE: - It is not allowed to work with an open flame in the close proximity of the XPS insulation.
- When using PVC membranes, a separation layer (i.e. FIBRAN *filter* SF32) must be installed between the PVC membrane and the XPS.