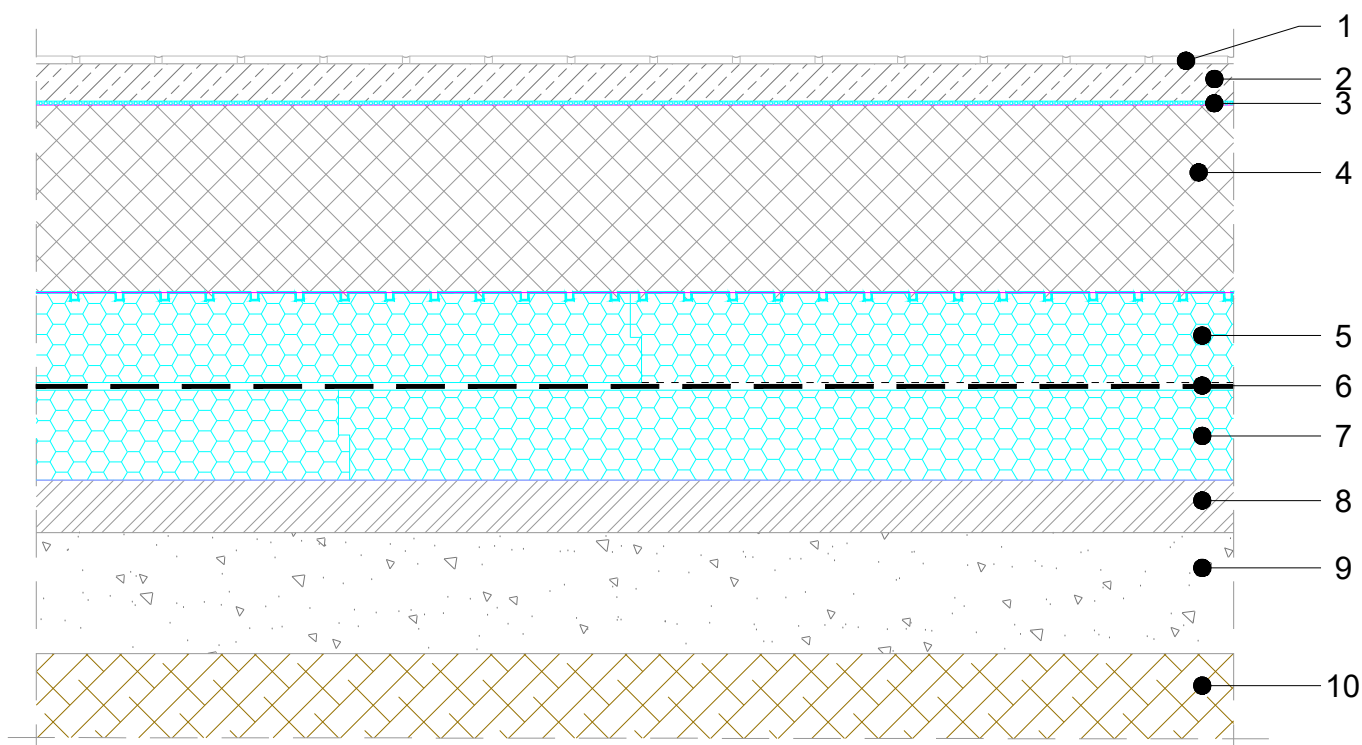


FLOOR AT THE GROUND LEVEL
SEISMIC FOUNDATION PILLOW whereas $a_g \geq 0.1g$

WATERPROOFING IN BETWEEN TWO LAYERS OF XPS / CERAMIC TILE FINISHING

BASIC SECTION,

M 1:10

4.22.1.1.00


COMPOSITION SYSTEMS BY RESISTANCE SOLUTION (dimensions in the detail are to be calculated):

1. CERAMIC TIES
2. CEMENT SCREED
3. EXTRUDED PE FOIL – IMPACT SOUND INSULATION
4. REINFORCED FOUNDATION SLAB
5. FIBRAN^{hydro} SEISMIC T-1,8sk/sk –BITUMEN, DOUBLE-SIDED ADHESIVE WATERPROOFING
- 6* FIBRAN^{hydro} T-3sk or
FIBRAN^{hydro} ANTIRADON 1,5sk –BITUMEN, ONE-SIDED ADHESIVE WATERPROOFING
7. FIBRAN^{xps} 400-L (500-L, 700-L)
8. LEAN CONCRETE
9. CRUSHED GRAVEL
10. COMPACTED SOIL

NOTE: - It is not allowed to work with an open flame in the close proximity of the XPS insulation.
 - In the case of high groundwaters it is mandatory to install two-layer of waterproofing.
 In the case of radon or geopathogenic radiation protection, instead of T-3sk it is recommended to use ANTIRADON 1,5sk
 - Instructions for implementation www.fibran.si