

## FLOOR AT THE GROUND LEVEL

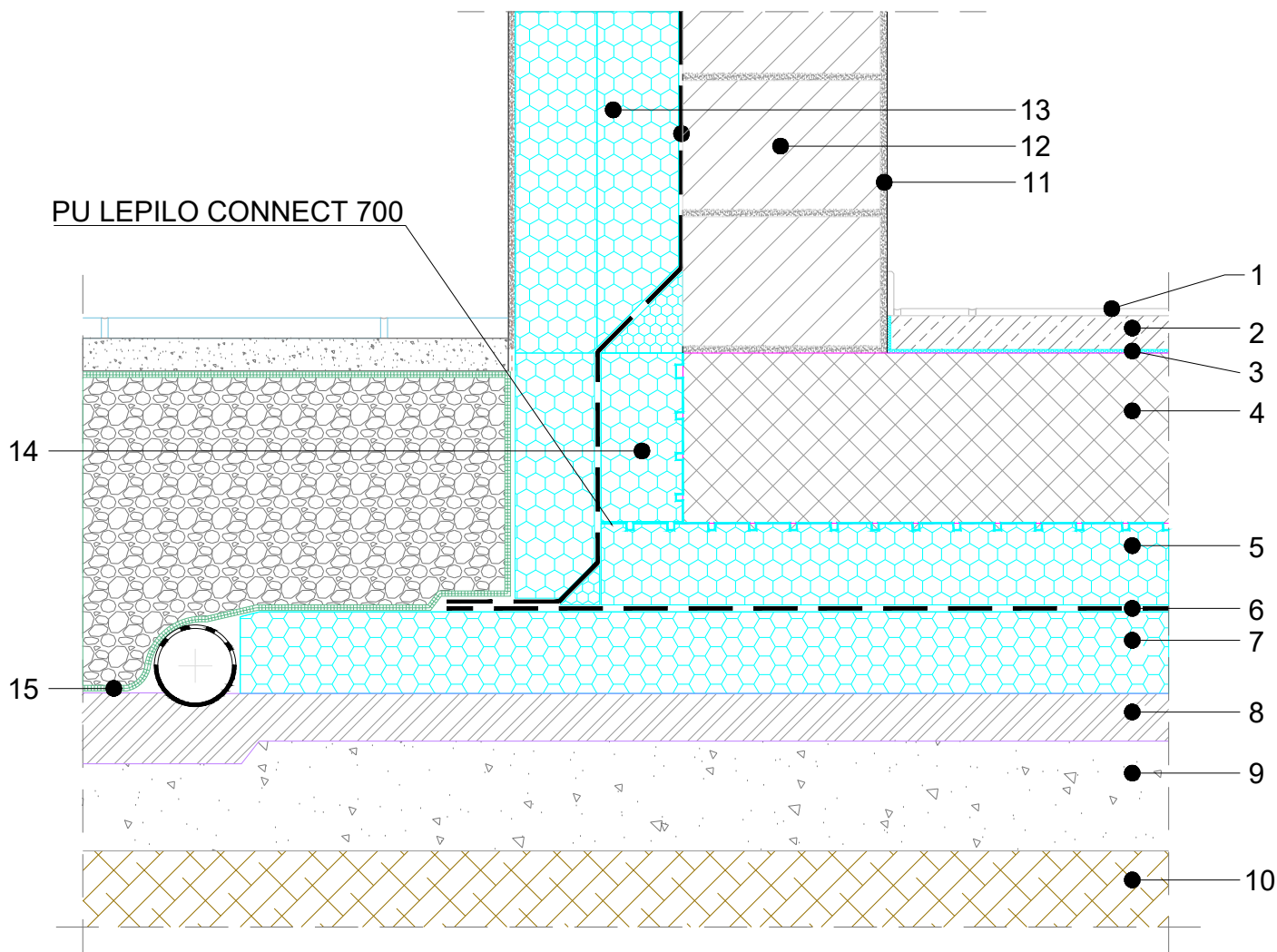
**SEISMIC FOUNDATION PILLOW** whereas  $a_g \geq 0.1g$

WATERPROOFING IN BETWEEN TWO LAYERS OF XPS / CERAMIC TILE FINISHING

BUILDING WITHOUT BASEMENT – PERMANENT FORMWORK

M 1:10

**4.22.1.1.05**



COMPOSITION SYSTEMS RESOLUTION (dimensions in the detail are calculated):

1. CERAMIC TIES
2. CEMENT SCREED
3. EXTRUDED PE FOIL – IMPACT SOUND INSULATION
4. REINFORCED FOUNDATION SLAB
5. FIBRAN*hydro* SEISMIC T-1,8sk/sk –BITUMEN, DOUBLE-SIDED ADHESIVE WATERPROOFING
- 6\* FIBRAN*hydro* T-3sk or FIBRAN*hydro* ANTIRADON 1,5sk –BITUMEN, ONE-SIDED ADHESIVE WATERPROOFING
7. FIBRAN*xps* 400-L (500-L, 700-L)
8. LEAN CONCRETE
9. CRUSHED GRAVEL
10. COMPACTED SOIL
11. PLUMMING PIPES
12. OUTER WALL
13. FIBRAN*xps* ETICS GF
14. FIBRAN*xps* FORM
15. FIBRAN*filter* 32

NOTE: - It is not allowed to work with an open flame in the close proximity of the XPS insulation.

- In the case of high groundwaters it is mandatory to install two-layer of waterproofing.

In the case of radon or geopathogenic radiation protection, instead of T-3sk it is recommended to use ANTIRADON 1,5sk

- Instructions for implementation [www.fibran.si](http://www.fibran.si)