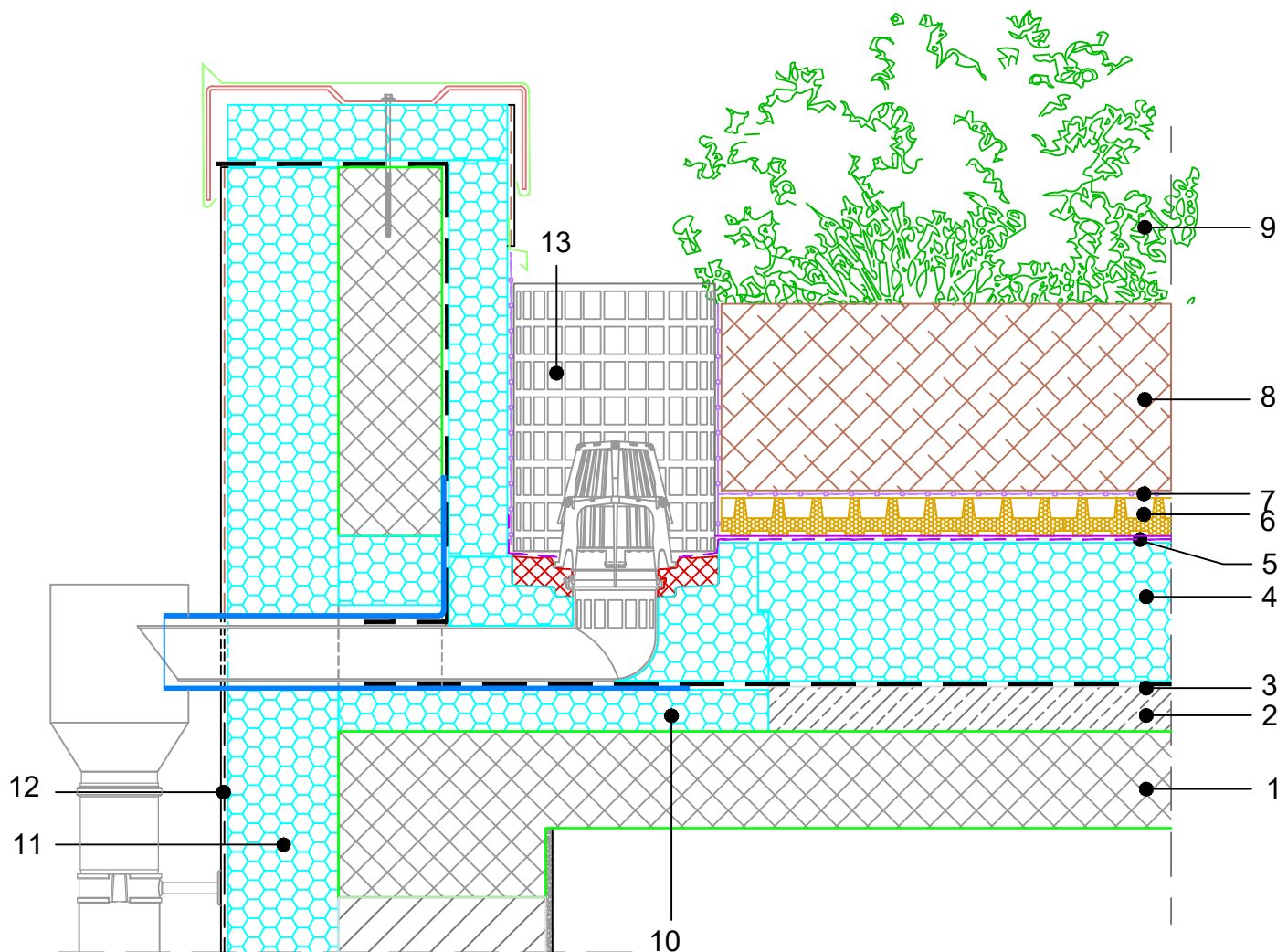


INVERTED FLAT ROOF  
 GREEN skin SEAL ROOF  
 SEMI-INTENSIVE GREENERY – GROUND COVERS, SMALL SHRUBS  
 ANGULAR RAINWATER OUTLET No 1, SCALE 1:10

**10.14.2.04**



COMPOSITION of system solution (dimensions in detail to be calculated):

1. REINFORCED CONCRETE SLAB
2. INCLINED CONCRETE
3. ROOT RESISTANT WATERPROOFING
4. FIBRANxps 300-L
5. FIBRANskin SEAL – vapor-permeable, waterproof membrane for quick drainage
6. DRAINAGE-ACCUMULATION LAYER
7. FIBRANfilter SF32 – drainage PP fleece
8. GROWING MEDIUM up to 30 cm
9. VEGETATION: GRASSES, PERENNIALS, GROUND COVERS, SMALL SHRUBS
10. FIBRANxps 300-L – partial insulation under water outlet to prevent thermal bridge
11. FIBRANxps ETICS
12. FACADE PLASTERS
13. PERFORATED INSPECTION CHAMBER

NOTE:

- It is not allowed to work with an open flame in the close proximity of the XPS insulation.
- When choosing type of waterproofing, it is necessary to take into account that chlorides of PVC membrane have neg. affect on XPS.
- joining of FIBRANskin membrane overlaps with double-sided adhesive tape FIBRANTape 2SEAL
- Root barrier: eco-product Root PROTECTOR (not suitable for plants with aggressive roots or rhizomes)
- Point 2. - Production upon project request