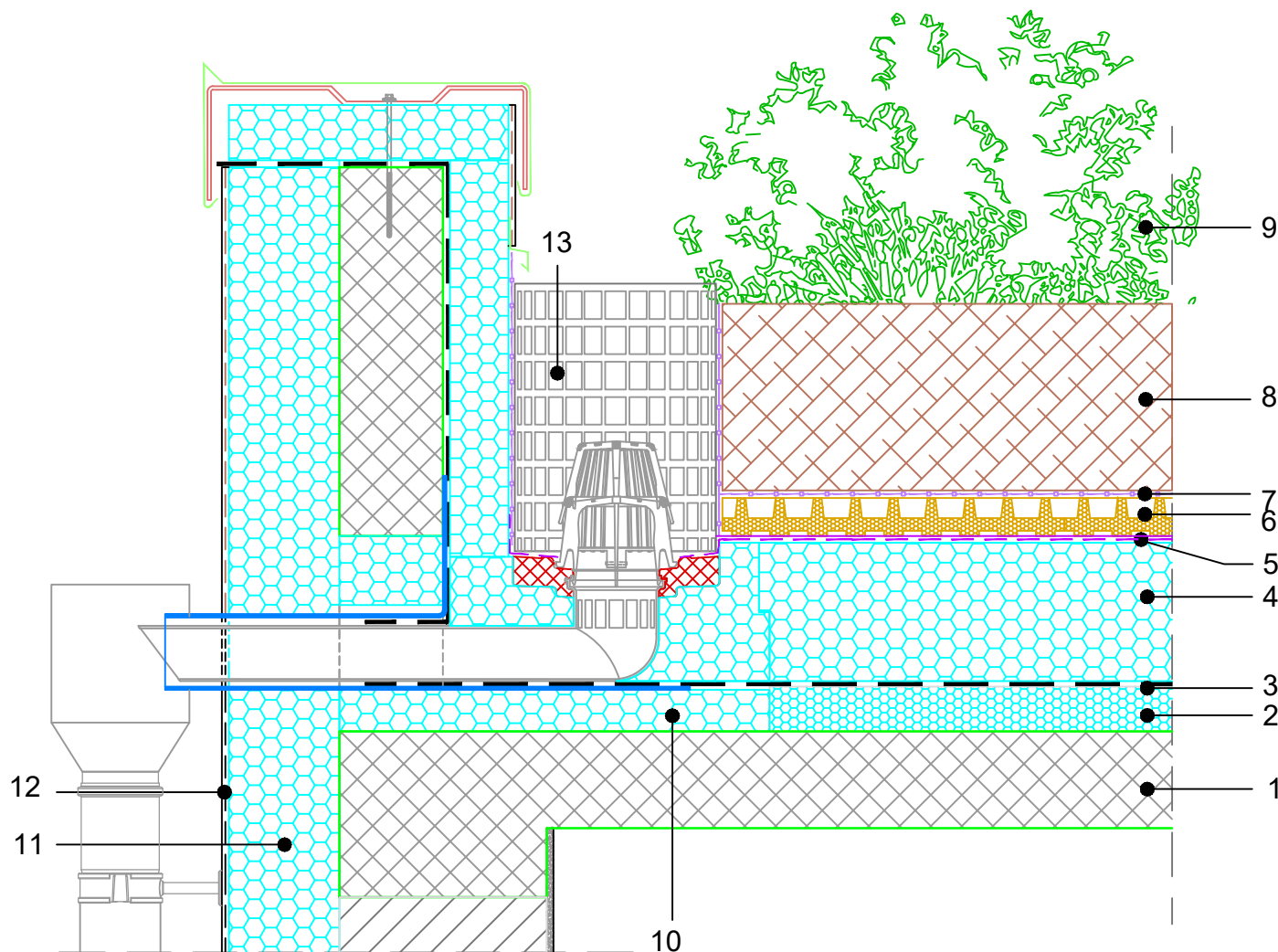


INVERTED FLAT ROOF
 OPTIMO ANTI-ROOT GREEN ROOF
 SEMI-INTENSIVE GREENERY
 ANGULAR RAINWATER OUTLET No 1, SCALE 1:10

10.18.8.04



COMPOSITION of system solution (dimensions in detail to be calculated):

1. REINFORCED CONCRETE SLAB
2. TAPERED INSULATION FIBRANxps INCLINE
3. WATERPROOFING
4. FIBRANxps 300-L – single layer
5. FIBRANSkin SEAL – vapor-permeable, waterproof membrane for quick drainage
6. DRAINAGE-ACCUMULATION LAYER
7. FIBRANfilter SF32 – drainage PP fleece
8. GROWING MEDIUM up to 30 cm
9. VEGETATION: grasses, perennials, ground covers, small shrubs
10. PERFORATED INSPECTION CHAMBER
11. FIBRANxps ETICS GF
12. FACADE PLASTERS
13. FIBRANxps 300-L – partial insulation under water outlet to prevent thermal bridge

NOTE:

- It is not allowed to work with an open flame in the close proximity of the XPS insulation.
- When choosing type of waterproofing, it is necessary to take into account that chlorides of PVC membrane have neg. affect on XPS.
- Root barrier: ECO ROOT protector (not suitable for invasive plants)
- Membrane joints be carried out accordingly to the manufacturer's instructions
- Position 2. - to be executed per project