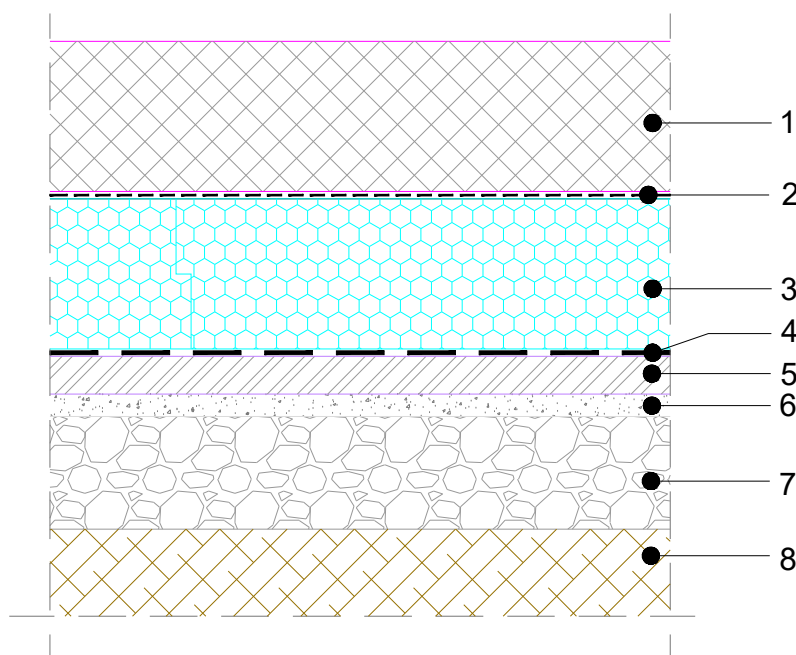


**FLOOR AT THE GROUND LEVEL****INDUSTRIAL FLOORING**

WATERPROOFING LAYED ONTO LEAN CONCRETE

BASIC SECTION, M 1:10

**4.01.1.0.00****COMPOSITION OF SYSTEM SOLUTION (dimensions to be calculated):**

1. REINFORCED CONCRETE SLAB, SPRINKLED WITH QUARTZ SAND
2. PE FOIL – 2 LAYERS
3. FIBRAN*xps* 400–L (500–L, 700–L)
4. WATERPROOFING
5. LEAN CONCRETE
6. LEVELING SAND
7. CRUSHED GRAVEL
8. COMPACTED SOIL

NOTE: - It is not allowed to work with an open flame in the close proximity of the XPS insulation.  
- When using PVC membranes, a separation layer (i.e. FIBRAN*filter* SF32) must be installed between the PVC membrane and the XPS.